



Providing Quality Products at your Door Step...



Precision Engineering Industries

An IMS Certified Company
(ISO 9001:2015 , ISO 14001:2015 & ISO 45001:2018)

Instrumentation Fittings , Valves & Erection Hardware



*HONORED WITH
"BEST VENDOR AWARD"
BY*



Introduction

Precision Engineering Industries is a group of highly qualified technocrats, with its Headquarters at Mumbai (India), & with fully Owned State of the Art technology, Manufacturing Plants at various locations in India.

An **IMS Certified (ISO 9001:2015 , ISO 14001:2015 & ISO 45001:2018) Company** with **over 35 year expertise** in Design, Manufacturing & Supply of Instrumentation Products, Erection Hardware & Various other Piping Solutions in All Metallurgies, having Extensive Experience in catering to requirements of Oil & Gas (Onshore/Offshore), Power, Atomic , Chemicals & Fertilizers & Petrochemical Industries.

Our Specialization includes in:-

- Instrumentation Tube Fittings
- Instrumentation valves & Valve Manifolds
- Pipe Fittings (Socket Weld & Screwed)
- Condensate Pots & Air Headers
- Orifice Plates & Flow Nozzle Assemblies
- Flanges
- Thermowells
- Syphons & Snubbers
- Sample Bomb
- Quick Disconnecting Couplings
- DBB Valves
- Spool Pieces / Calibration Chambers
- Sampling Systems
- Pre Fabricated Skids
- Instrumentation Mounted Hook-Ups

We at **Precision** bear utmost Quality Consciousness, We have complete in-house testing Facilities such as Hydraulic testings, Pneumatic Testings, Flexure Fatigue Rotary Testings, Vacuum Impulse Vibrations & Temperature Cycling, which is spread to our complete Product range.

All the above mentioned Products are offered with relevant Test Certificates, duly Inspected by various internationally Approved TPIA's (as per the client's Requisitions).



Our Forte is the assurance of Quality that is Un-Parallel to any others. Our Track Record and References of our clients justifies that our supplies has been Extremely Satisfactory.

We match the pace of the best to cater to the requirements of our Most Esteemed Clients with PRECISION & DEXTERITY in our Work.

Our Enterprising Staff and most cordial approach shall ensure that you have, complete satisfactory Experience once your order is placed on us.

Since the Inception of **Precision**, Business has always been secondary to Customer Satisfaction, & that forms the basis of **Precision** principles on which our team performs.

Our aim is to serve the Clients in Every Possible Way, Hence We consistently work on developing and continuously upgrading our Extensive Product Range and infrastructure.

Specialization

(Salient Features of Precision's Tube Fittings)

1

Precision Tube Fittings generally are Double Compression / Twin Ferrule Type with Front & Back Ferrules & Nut. Single Ferrule Type Fittings are also available on request.

2

Pipe Threads: Generally all Male/Female Pipe Threads are provided with NPT Taper. However other threads as per BSP, BSPT, Metric, ISO or any other Standards can be supplied upon Request. All threads shall be strictly as per Go-No Go Gauges.

3

Silver Plating on Nuts: For Repeated Use & Re-Use, It's a standard practice at Precision to supply all SS Tube Fitting Nuts with Silver Plating on Threads. This avoids Thread Seizure/Anti Galling during repeated use & Re-use.

4

All Ferrule sets are subjected to special and selective Heat Treatment, so as to achieve, such reliable leak proof connections, simply and quickly, without using Special tools, and with minimum installation efforts.

5

Besides rendering selective hardness to ferrules, all chamfer degrees, and thickness are carefully controlled to attain perfect swaging on tubes. In tandem – The Depths and Chamfer Degrees off the fitting's bodies of corresponding OD sizes are strictly maintained and controlled to attain interchangeable leakproof joints.

6

Testing of Precision Fittings can be performed at Hydraulic Pressure up to 20000 PSI & Pneumatic upto to 2000 PSI at our in house Test facilities. Testings are performed as per required specifications Viz., BS 4368, ASTM F 1387-19.

7

Precision Fittings are engineered attention to close tolerances on all working parts of the fittings, and with many other intricate steps, as per our Q.A. plan.

8

1-1/4" Turn tightening of Nut from initial Tube Snug Position is sufficient for achieving high Pressures applications. For upto 1/2" OD size, tightening to attain 1 1/4" Turn can be achieved with two Spanners by hand WITHOUT using any VISE making sure that torque will not be transferred to the tubes, while swaging.

9

Plastic End caps are provided on Threaded ends & Tube OD sides for Protection.

Areas of Operations



**Onshore
&
Offshore**

Petrochemicals



Oil & Gas

**Chemicals
& Fertilizers**



Power Plant

Refinery



Precision's Approvals & Registrations with...

Chemical, Fertilizers, Dockyard, Power & Atomic



Refineries & Petrochemical



Oil & Gas (Offshore & Onshore)



Shop Approvals



TPIA



EPC & LSTK



Extensive Product Range



Product Categories

Tube Fittings DFDC Type

Valves & Valve Manifolds

Single / Double Block & Bleed Valves

Thermowells, Quick Disconnecting Couplings

Pipe Fittings & Flanges

Condensate Pots, Air Headers & Syphons

Spool Pieces & Calibration Chambers

Sample Bomb

Sampling Systems

Instrumentation Hook-ups

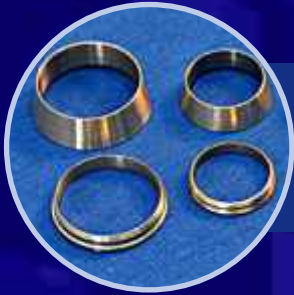
Pre Fabricated Skids

Tubes & Pipes

Tube Clamps



Tube Fittings



Front Ferrules & Back Ferrules

Tube Size. : Fractional: 1/16" OD thru 1" OD for Fractional & Metric: 2 mm OD thru 25 mm OD

Tube Unions Tube OD (All Sides)

Tube Size. : Fractional: 1/16" OD thru 1" OD & Metric: 2 mm OD thru 25 mm OD



Male Connector Tube OD x Male Pipe Threads

Tube Size. : Fractional: 1/16" OD thru 1" OD & Metric: 2 mm OD thru 25 mm OD

Male Thread : From 1/8" thru 1" Male NPT (Taper) Threads (BSP/ or Any other Threads on Request)

Female Connector Tube OD x Female Pipe Threads

Tube Size. : Fractional: 1/16" OD thru 1" OD & Metric: 2 mm OD thru 25 mm OD

Female Thread : From 1/8" thru 1" Female NPT (Taper) Threads (BSP/ or Any other Threads on Request)



Reducing Unions Tube OD (All Sides)

Tube Size. : Fractional: 1/16" OD thru 1" OD & Metric: 2 mm OD thru 25 mm OD

Union Elbows Tube OD (All Sides)

Tube Size. : Fractional: 1/16" OD thru 1" OD & Metric: 2 mm OD thru 25 mm OD



Union Tees Tube OD (All Sides)

Tube Size. : Fractional: 1/16" OD thru 1" OD & Metric: 2 mm OD thru 25 mm OD

Tube Fittings



Male Elbows Tube OD x Male Pipe Threads

Tube Size. : Fractional: 1/16" OD thru 1" OD & Metric: 2 mm OD thru 25 mm OD

Male Thread : From 1/8" thru 1" Male NPT (Taper) Threads (BSP/Metric or Any other Threads on Request)

Reducing Bulk Head Unions Tube OD (All Sides)

Tube Size. : Fractional: 1/16" OD thru 1" OD & Metric: 2 mm OD thru 25 mm OD



Union CROSS Tube OD (All Sides)

Tube Size. : Fractional: 1/16" OD thru 1" OD & Metric: 2 mm OD thru 25 mm OD

Bulk Head Male Connector Tube OD x Male Pipe Threads

Tube Size. : Fractional: 1/16" OD thru 1" OD & Metric: 2 mm OD thru 25 mm OD

Male Thread : From 1/8" thru 1" Male NPT (Taper) Threads (BSP/Metric or Any other Threads on Request)



Bulk Head Unions Tube OD x Tube OD

Tube Size. : Fractional: 1/16" OD thru 1" OD & Metric: 2 mm OD thru 25 mm OD

Socket Weld Connector Tube OD x Socket Weld

Tube Size. : Fractional: 1/16" OD thru 1" OD & Metric: 2 mm OD thru 25 mm OD

Female Socket : From 1/4" NB SW thru 1" NB SW.



Circlip Plug Tube OD

Tube Size. : Fractional: 1/16" OD thru 1" OD & Metric: 2 mm OD thru 25 mm OD

Tube Fittings



Bulk Head Female Connector Tube OD x Female Pipe Threads

Tube Size. : Fractional: 1/16" OD thru 1" OD & Metric: 2 mm OD thru 25 mm OD

Female Thread : From 1/8" thru 1" Female NPT(Taper) Threads (BSP/Metric or Any other Threads on Request)



Tube Connector Tube OD x Male Socket Weld Plain.

Tube Size. : Fractional: 1/16" OD thru 1" OD & Metric: 2 mm OD thru 25 mm OD

Male Socket : From 1/4" NB PL thru 1" NB PL.



Tube Cap Tube OD

Tube Size. : Fractional: 1/16" OD thru 1" OD & Metric: 2 mm OD thru 25 mm OD

Male Adaptor Tube OD TX Male Pipe Threads

Tube Size. : Fractional: 1/16" OD thru 1" OD & Metric: 2 mm OD thru 25 mm OD

Male Thread : From 1/8" thru 1" Male NPT (Taper) Threads (BSP/ Metric or Any other Threads on Request)



Female Adaptor Tube OD TX x Female Pipe Threads

Tube Size. : Fractional: 1/16" OD thru 1" OD & Metric: 2 mm OD thru 25 mm OD

Female Thread : From 1/8" thru 1" Female NPT(Taper) Threads (BSP or Any other Threads on Request)

Bug Screen

Male Thread : From 1/4" thru 1" Male NPT (Taper) Threads (BSP/ Metric or Any other Threads on Request)



Flange Adaptor

Tube Size. : Fractional: 1/2" OD thru 1" OD & Metric: 12 mm OD thru 25 mm OD

Female Thread : From 1/2" thru 2" NB (As per B16.5)

Above Tube Fittings are available in all Metallurgies, Viz., **SS 304, 304L, 316, 316L, (NACE & NON NACE) Brass, Monel, Hastelloy-C, Inconel or Any other Metallurgy.**

Valves



Needle Valve (Integral Bonnet) Female Pipe Thread

Female Thread : From 1/8" to 1" Female NPT (Taper) / Class: 3000#, 6000#, 9000#

Threads (BSP/ Metric or Any other Customized End Connection on Request)



Needle Valve (Union Bonnet) Female Pipe Thread

Female Thread : From 1/8" to 1" Female NPT (Taper) / Class: 3000#, 6000#, 9000#

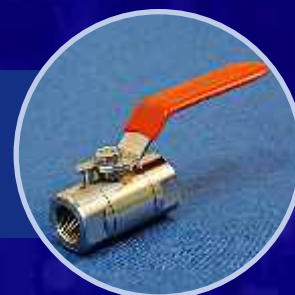
Threads (BSP/ Metric or Any other Customized End Connection on Request)



High Pressure Needle Valve Female Pipe Thread

Female Thread : From 1/4" to 1/2" Female NPT (Taper) / Class: 3000#, 6000#, 9000#

Threads (BSP/ Metric or Any other Customized End Connection on Request)



Ball Valve Female Pipe Threads

Female Thread : From 1/8" to 1" Female NPT (Taper) / Class: 800#

Threads (BSP/ Metric or Any other Customized End Connection on Request)



OD Type Ball Valve Tube OD x Tube OD

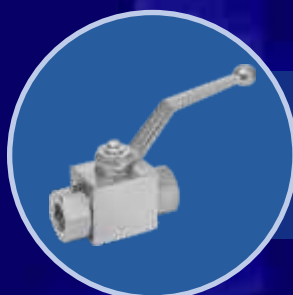
Tube O.D. : From 1/8" OD for Fractional From 1mm OD to 25 mm OD / Class: 800#



3 way Ball Valve (Instrumentation) Female Pipe Threads

Female Thread : From 1/4" to 1" Female NPT (Taper) / Class: 800#, 1500#

Threads (BSP/ or Any other Customized End Connection on Request)



High Pressure Ball Valve Female Pipe Thread

Female Thread : From 1/4" to 1/2" Female NPT (Taper) / Class: 3000#, 6000#, 9000#

Threads (BSP/ Metric or Any other Customized End Connection on Request)

Valves



4 way Ball Valve (Instrumentation) Female Pipe Threads

Female Thread : From 1/4" to 1" Female NPT (Taper) / Class: 800#, 1500#

Threads (BSP/ or Any other Customized End Connection on Request)



Globe Valve (Miniature Pattern) Female Pipe Threads

Female Thread : From 1/8" to 1" Female NPT (Taper) / Class: 3000#, 6000#

Threads (BSP/ Metric or Any other Customized End Connection on Request)



Gate Valve (Instrumentation) Female Pipe Threads

Female Thread : From 1/4" to 1" Female NPT (Taper) / Class: 800#, 1500#

Threads (BSP/ or Any other Customized End Connection on Request)



Bolted Bonnet Globe Valve Female Pipe Threads

Female Thread : From 1/2" to 1-1/2" Female NPT (Taper) / Class: 800#, 1500#, 2500#

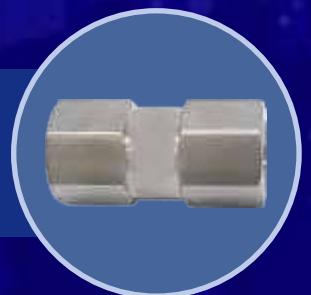
Threads (BSP/ Metric or Any other Customized End Connection on Request)



Bolted Bonnet Gate Valve Female Pipe Threads

Female Thread : From 1/2" to 1-1/2" Female NPT (Taper) Class: 800#, 1500#, 2500#

Threads (BSP/ Metric or Any other Customized End Connection on Request)



Non Return Valve

Female Thread : From 1/4" to 1" Female NPT (Taper) / Class: 3000#, 6000#, 9000#

Threads (BSP/ Metric or Any other Customized End Connection on Request)

Above Valves are available in all Metallurgies, Viz., **SS 304, 304L, 316, 316L, (NACE & NON NACE) Brass, Monel, Hastelloy-C, Inconel or Any other Metallurgy.**

Valve Manifolds



2 Way Flat Type Manifold Valve Female Pipe Threads

Female Thread : From 1/4" to 1" Female NPT (Taper) / Class: 3000#, 6000#, 9000#

Threads (BSP/ Metric or Any other Customized End Connection on Request)

2 Way T-Type Manifold Valve Female Pipe Threads

Female Thread : From 1/4" to 1" Female NPT (Taper) / Class: 3000#, 6000#

Threads (BSP/ Metric or Any other Customized End Connection on Request)



2 Way Angle Type Manifold Valve Female Pipe Threads

Female Thread : From 1/4" to 1" Female NPT (Taper) / Class: 3000#, 6000#, 9000#

Threads (BSP/ Metric or Any other Customized End Connection on Request)

3 Way Flat Type Manifold Valve Female Pipe Threads

Female Thread : From 1/4" to 1" Female NPT (Taper) / Class: 3000#, 6000#, 9000#

Threads (BSP/ Metric or Any other Customized End Connection on Request)



3 Way T-Type Manifold Valve Female Pipe Threads

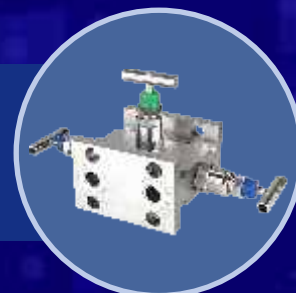
Female Thread : From 1/4" to 1" Female NPT (Taper) / Class: 3000#, 6000#

Threads (BSP/ Metric or Any other Customized End Connection on Request)

3 Way H-Type Manifold Valve Female Pipe Threads

Female Thread : From 1/4" to 1" Female NPT (Taper) / Class: 3000#, 6000#

Threads (BSP/ Metric or Any other Customized End Connection on Request)

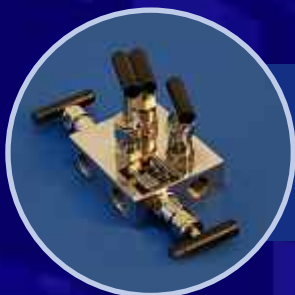


3 Way Manifold Valve - Coplanar Type

Female Thread : From 1/4" to 1" Female NPT (Taper) / Class: 3000#, 6000#

Threads (BSP/ Metric or Any other End Connection on Request)

Valve Manifolds



5 Way Flat Type Manifold Valve Female Pipe Threads

Female Thread : From 1/4" to 1" Female NPT (Taper) / Class: 3000#, 6000#, 9000#

Threads (BSP/ Metric or Any other Customized End Connection on Request)



5 Way T-Type Manifold Valve Female Pipe Threads

Female Thread : From 1/4" to 1" Female NPT (Taper) / Class: 3000#, 6000#

Threads (BSP/ Metric or Any other End Connection on Request)



5 Way H-Type Manifold Valve Female Pipe Threads

Female Thread : From 1/4" to 1" Female NPT (Taper) / Class: 3000#, 6000#

Threads (BSP/ Metric or Any other End Connection on Request)

5 Way Manifold Valve - Coplanar Type

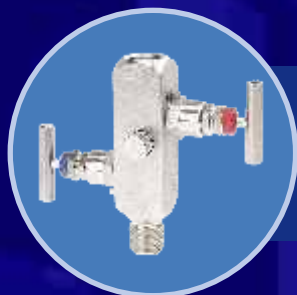
Female Thread : From 1/4" to 1" Female NPT (Taper) / Class: 3000#, 6000#, 9000#

Threads (BSP/ Metric or Any other Customized End Connection on Request)



Above Valve Manifolds are available in all Metallurgies, Viz., **SS 304, 304L, 316, 316L, (NACE & NON NACE) Brass, Monel, Hastelloy-C, Inconel or Any other Metallurgy.**

Single / Double Block & Bleed Valves



Single Block and Bleed Valve

Female Thread : From 1/4" to 1" Female NPT (Taper) / Class: 3000#, 6000#, 9000#

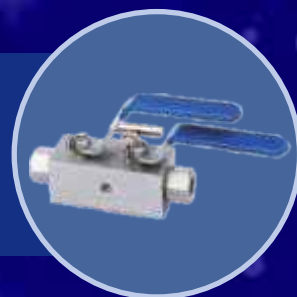
Threads (BSP/ Metric or Any other Customized End Connection on Request)

Double Block and Bleed Valve

Female Thread : From 1/4" to 1" Female NPT (Taper) / Class: 3000#, 6000#, 9000#

Threads (BSP/ Metric or Any other Customized End Connection on Request)

Flange Connection : From 1/2" to 2 NB (As per B 16.5)



Above Single / DBB Valves are available in all Metallurgies, Viz., **SS 304, 304L, 316, 316L, (NACE & NON NACE) Brass, Monel, Hastelloy-C, Inconel or Any other Metallurgy.**

Thermowells, Quick Disconnecting Couplings



Thermowell

Types : Screwed / Threaded / Flanged

Female Thread : From 1/4" to 1" Female NPT (Taper) / Class: 3000#, 6000#, 9000#

Threads (BSP/ Metric or Any other Customized End Connection on Request)

Flange Connection : From 1/2" to 2 NB (As per B 16.5)

Quick Disconnecting Coupling Female Pipe Threads

Female Thread : From 1/4" to 1" Female NPT (Taper) / Class: 3000#, 6000#

Threads (BSP/ Metric or Any other End Connection on Request)



Above Thermowells, QDC are available in all Metallurgies, Viz., **SS 304, 304L, 316, 316L, (NACE & NON NACE) Brass, Monel, Hastelloy-C, Inconel or Any other Metallurgy.**

Pipe Fittings



Socket Weld Fittings Female Socket Type

Socket weld : 1/4" to 2" in 3000# , 6000# , 9000#

MOC: A105, SS 304, 304L, 316, 316L, 321, F22, F91, Monel

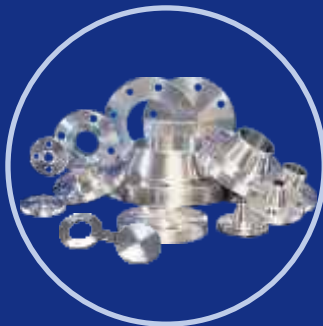
Screwed Fittings Female Pipe Threads

Female Thread : 1/4" to 2" Female Thread (Taper) in 3000# , 6000#

MOC: A105, SS 304, 304L, 316, 316L, 321, F22, F91, Monel



Flanges



Flanges

Item Description : WNRF Flanges, SORF Flanges, SWRF Flanges, Threaded Flanges, Lap Joint Flanges, RTJ Flanges, Blind Flanges, Spectacle Flanges.

Size : 1/2" to 24"

MOC : A-105, SS316, 316L, 304, 304L, 321, F22, F91.

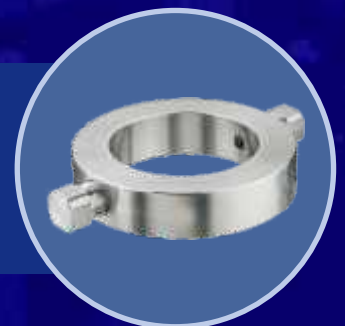
Class Rating: 150#, 300#, 600#, 900#, 1500#, 2500#

FLUSHING RINGS

Size : 1/2" to 2"

MOC : A-105, SS316, 316L, 304, 304L, 321, F22, F91.

Class Rating: 150#, 300#, 600#, 900#, 1500#, 2500#



Industrial Fabrication

Condensate Pots



Condensate Pots

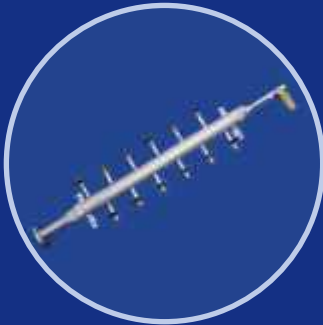
Size : 2"NB , 3"NB , 4"NB upto 6"NB; **Connection No :** 3 or 4 Ways.

Connection : NPTF / Socket weld / Butt Weld (As per client requirement)

Schedule : 40, 80, 120, 160, XXS.

MOC : A106 GrB, SS304 / SS304L, SS316 / SS316L, SS321, A 335 P22 / A 335 P91.

Air Headers / Air Distribution Pots



Air headers / Air Distribution Pots

Pneumatic Test Pressure : Schedule 40 - 7 kg/cm.sq, Schedule 80 - 10 kg/cm.sq,
Schedule 160 - 20 kg/cm.sq,

Number of Outlet : 4 way, 6 way, 8 way, 10 way, 12 way

MOC : SS304, 304L, 316, 316L, 321, A106 Gr. B, A106 Gr. B (Galv)

Connections

Inlet : Flanged / Threaded

Outlets : 1/4" thru 1/2" Threaded Ball Valve/ Needle Valve (as per client requirement)

Syphons



Syphons

Size : 1/2" NB & 3/4" NB

Test Pressure : Sch.40 60 Kg/cm2, Sch.80 120 Kg/cm2, Sch.160 210 Kg/cm2,
XXS 210 Kg/cm2

MOC : SS 304 / 304L, 316 / 316L, 321, AS P11, P22, P91, CS A106 Gr.B

End Connection : 1/2" NB BW, SW, NPTF (Any other As per client requirement)

Industrial Fabrication

Spool Pieces

Spool Pieces

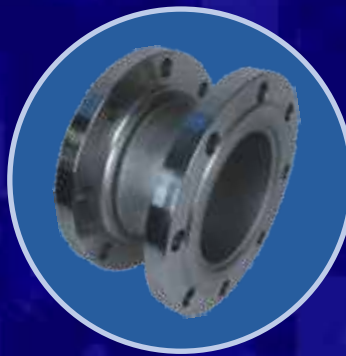
Types Of Spool: Straight type ,Y type,Angle Type and T type.

Flange Type: WNRF, SWRF and Blind Flange.

Flange Size: 3" NB to 24" Class: 1500 #

Pipe Size: SCH 3" NB to 24"NB upto SCH XXS (As per client requirement)

MOC: A105,A106,SS 304,SS 316 (Any special material as per client requirement)



Calibration Chambers

Calibration Chambers

End Connection: Flange end 2" NB to 6" NB Class: 150 # to 1500 # (As per B 16.5)

Pipe Size: SCH 2" NB to 24" NB upto SCH XXS (As per client requirement)

MOC: A105,A106,SS 304,SS 316 (Any special material as per client requirement)



Industrial Fabrication

Storage Tanks

Storage Tanks

These storage tanks are offered to our clients in the following shapes :

Horizontal Storage Tanks

Vertical Storage Tanks

Conical Head Storage Tanks

(Design and Dimension as per the client requirement)

Capacity from : 50 Liter. to 50,000 Liter.

MOC: M.S., S.S. 304, S.S.316.

Application : Chemicals, Pharmaceuticals, Food Products, Dairy & others.



Sample Bomb

Precision range of Sampling Cylinder is designed to provide safe containment for storage, examination and transportation of both liquids and gases. Precision Sampling Cylinder is available in Stainless Steel, Carbon Steel, Monel, Hastelloy-C, Inconel or Any other Metallurgy. We have ability to customize Sampling Cylinders to suit your exact needs.

Features

- Customize your own Sampling Cylinder that fits best in your process either double ended or single ended
- Entire System available which include Pressure Gauges, Needle Valves and Pipe Fittings
- Sampling cylinders in different capacity of 150 cc, 300 cc, 500 cc, 1000 cc, 1500 cc
- Variety of end connections includes Male / Female NPT, BSPT, BSPP
- Dust Cap provided
- High Pressure Rating upto 10000 PSI

Typical Applications

- Sampling hydrocarbons in refineries and petrochemical plants
- Gas sampling for chromatographic analysis
- Snubbers in reactor feed lines
- Surge accumulators in high pressure gas systems
- High vacuum systems as experimental chambers and molecular sieves
- Chemical reaction vessels



Sampling Systems

Precision design standard and custom made gas or liquefied gas spot sampling systems that can take spot samples of gasses, liquefied gas or flashing fluids under process conditions in sample cylinders. The systems with sample cylinders enable operators to obtain samples of gasses with high process pressures, liquefied, hazardous or toxic gasses.

Features

- Sample volumes cylinders 150, 300, 500, 1000 and 2250 ml (other on request)
- Max. Process Pressure 124 barg (1800 psig), 345 barg (5000 psig) or 689 barg (10000 psig)
- Safe (sampling) Process Temperature 60°C (140°F), high temperature with sample cooler
- Complete sampling systems available in stainless steel, Monel, Inconel, Hastelloy, Duplex or any other Metallurgy.
- One-handle operation by multiple valves guarantees simple operation and easy sample taking without complicated sampling procedures
- Purge options available
- Sampling systems with NACE MR0175 or NACE MR0103 standards for sour gas (H₂S)



Description

Gas or liquefied gas sample panels/stations, standard designs and custom made conform client specifications. Sampling systems for Gas or Liquefied Gas Applications, for high pressure, low and high temperature, corrosive, arduous and sour service, strong toxicity, strong volatile and dangerous liquid gas mixture or gas which is bane to the environment.

Benefits

- Closed Loop and Emission Free Sampling
- Safer for the operator and environment, prevent pollution
- Safer for the sample and safe sample
- Easy in operation and Low maintenance
- Options: Spring return handle on sample valve, panel-mounted and protection cabinets with heater, floor-stands, special elastomers on request, all kind of process connections, sample coolers

Applications

Acetylene samples, Butane samples, Ethylene samples, Flue gas samples, Natural gas samples, LPG samples, Propylene samples, Chemical mixture samples, Hydrocarbon samples, Liquefied gas samples, Liquid flashing.

Instrumentation Hook-ups

Pressure Gauge Hook-up

Pressure Gauge Hook-up

Connection: To connect main line pressure gauge with Non Return Valve Connection.

Size : 1/2" NPTF

Pressure Gauge Range : 0-600 kg/cm²

MOC: A105, SS 304 ,SS316 (As per client requirement)



Differential Flow Transmitter Hook-up

Differential Flow Transmitter Hook-up

Connection: 5 way 'H' Type valve manifold to connect transmitter with option of valves (Ball/Globe/Needle)

Size : 1/2" (End connection as per client requirement)

Pressure: 6000 PSI

MOC: A105, SS 304 ,SS316 (As per client requirement)



Remote Mounted Hook-up

Instrument hook-up from Precision are custom designed to our clients and are available with different end connections and material to suit site condition. Precision offers clients to complete hook-up solution including specially designed enclosures and other accessories required for site installation.



Pre Fabricated Skids

We, at PRECISION are Specialized in Custom Built Commercial & Industrial Skids as per Client's Engineering & Design

With our in house Expertise Purchase and Execution team all the fittings and Equipments used in these skids are either manufactured in house or procured from reputed Mill / Make as specified/required by our esteemed client.

We have our own in house testing facilities to test all our Skids and duly cleared by Third Party Inspection Agencies before Dispatch.



Tubes

S. S. Seamless Tubes

Size Range : 1/4" OD to 1" OD, 0.71 MM to 2.1 MM

Specification : A-213, A-269, A-249

Grades : TP-304, 304L, 304H, 316, 316L, 316H, 316Ti, 321, 347, 347H, 904L

Monel Seamless Tubes

Size Range : 1/4" OD to 1/2" OD, 0.71 MM to 2.1 MM

Specification : B165 UNS 4400, B729

Grades : Monel

Copper Tubes

Size Range : 1/4" OD to 1/2" OD, 0.71 MM to 2.1 MM

Specification : B68, B75

Grades : Copper



Pipes

S. S. Seamless & Welded Pipes

Size Range : 1/4" NB to 16" NB, SCH 5, SCH 10, SCH 20, SCH 40, SCH 80, SCH 160, SCH XXS.

Class for Welded Pipes : A, B & C

Specification : ASTM A-312, ASTM A 358, A672

Grades : TP-304, 304L, 304H, 316, 316L, 316H, 316Ti, 321, 347, 347H, 904L

C. S. Seamless & Welded Pipes

Size Range : 1/4" NB to 16" NB, SCH 5, SCH 10, SCH 20, SCH 40, SCH 80, SCH 160, SCH XXS.

Class for Welded Pipes : A, B & C

Specification : ASTM A-106 Gr. B, A-333, SA 53

Grades : B & C

Alloy Steel Seamless & Welded Pipes

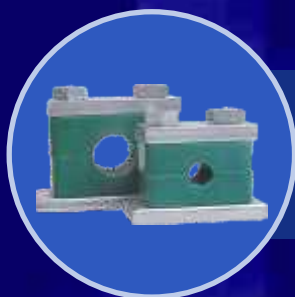
Size Range : 1/4" NB to 16" NB, SCH 5, SCH 10, SCH 20, SCH 40, SCH 80, SCH 160, SCH XXS.

Class for Welded Pipes : A, B & C

Specification : ASTM A-335, A-333M

Grades : P11, P22, P91

Tube Clamps

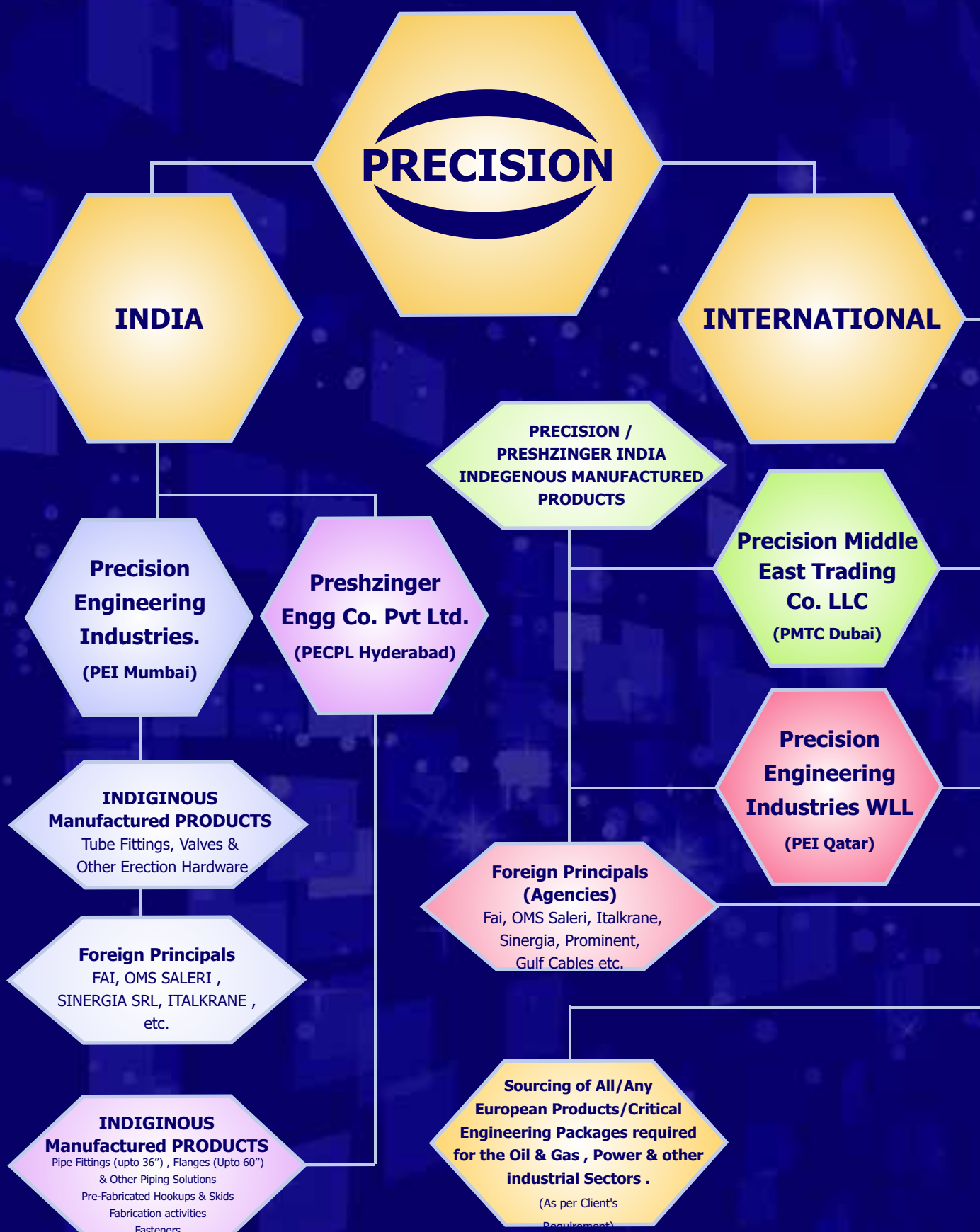


Tube Clamps Tube OD

Tube Size. : Fractional: 1/4" OD thru 1" OD & Metric: 6 mm OD thru 25 mm OD

Clamp Body Material : Polypropylene, Aluminium & Poly Amid

PRECISION GROUP OF COMPANIES



Contact Us

Registered Offices

Precision Engineering Industries

Unit No 7, Siddhapura Industrial Estate, Off S.V Road, Near Religare Labs,
Goregaon West, Mumbai 400062

Telephone: +91-022-42631700 **Email:** info@precisionenggindia.com ; sales@precisionenggindia.com

Website: www.precisionenggindia.com

Factories

Unit 1

Precision Engineering Industries

Unit No 7, Siddhapura Industrial Estate,
Off S.V Road, Near Religare Labs,
Goregaon West, Mumbai 400062.

Telephone: +91-022-42631700

Unit 2

Precision Engineering Industries

Plot No 16, Navakar Industrial Estate,
SUNDRAM Building, Sativali,
Vasai - 401208.

Telephone: +91-250-6601108

International Branch Office

Precision Middle East Co. LLC

UAE Sales : 1201, Opal Tower, Business Bay,
Dubai, UAE. PO Box : 236743.

Telephone: +971-4-2390945 / +971-4-2391949 **Email:** info@precisionuae.net ; sales@precisionuae.net

Website: www.precisionuae.ae



Scan for PEI India Sales



Scan for Detailed Brochure